

Chorley
Council

Planning
Committee Meeting

21 December 2021



Item 3b

21/00072/FUL

2 Heath Paddock, Hut Lane, Heath Charnock

Change of use of the land to a residential Gypsy and Traveller site involving the siting of two mobile homes and five touring caravans and retention of the utility block and access

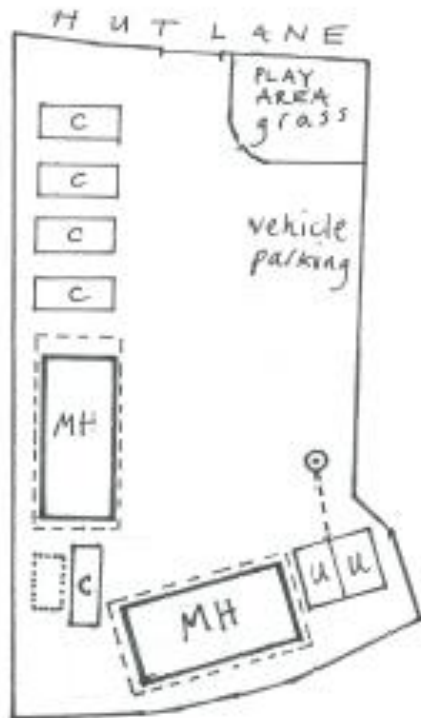
Location plan



Aerial photo



Site plan



DRAWING: HUTLANE PROPOSED
SITE PLAN

SCALE ~ 1:500 at A3

DRAWN BY CJ TYLER

MICHAEL HARGREAVES PLANNING
5 HIGH STREET - SWAFFHAM PRIOR
CAMBRIDGE - CB25 0LD

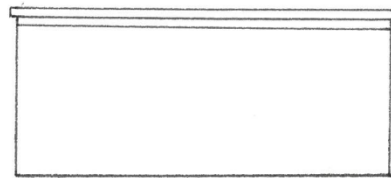
KEY:

- U UTILITY BLOCK
- C TOURING CARAVAN
- MH MOBILE HOME
ON CONCRETE BASE
- ⊙ SEPTIC TANK
- ⌊ OPEN STORAGE

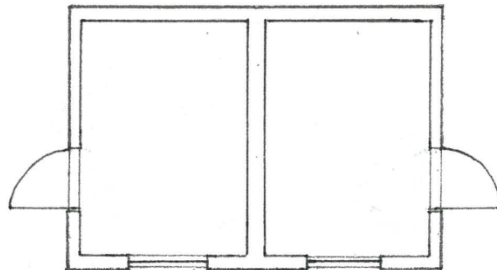
0 10 20 30 40
metres

Utility block

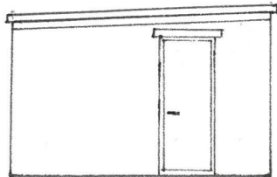
DRAWING: HUTLANE
UTILITY BLOCK PLAN
SCALE: 1-100 at A3
DRAWN BY C J TYLER
MICHAEL HARGREAVES PLANNING
5 HIGH STREET • SWAFFHAM PRIOR
CAMBRIDGE • CB25 0LD



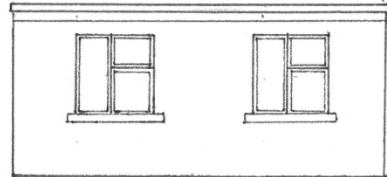
REAR ELEVATION



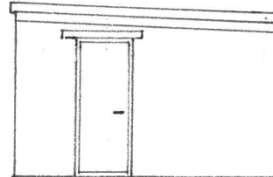
UTILITY BLOCK : PLAN



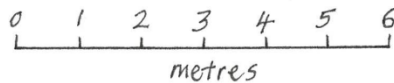
SIDE ELEVATION



FRONT ELEVATION



SIDE ELEVATION



Site entrance – Applicant's photo



Site photo - Applicant's photo



Site photo - Applicant's photo

